



**PENNIES
IMPACTING PEOPLE**
RICHLAND COUNTY TRANSPORTATION PENNY PROGRAM



PDT Procurement Procedures

June 14, 2016

4:00 pm

Agenda

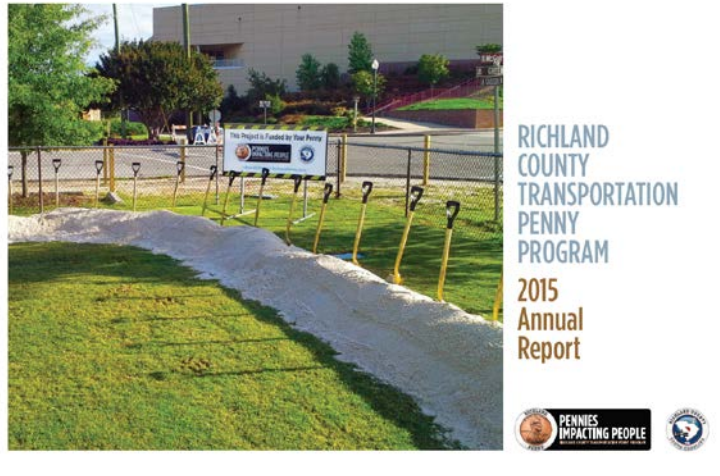
- Richland County Penny Tax Overview
- Program Development Team (PDT) Overview
- Project Advertisements
- Plans and Specifications
- Bidding
- Sample Forms
- Bid Evaluation Procedure
- Bid Award Procedure
- Contract
- Construction Schedule
- Safety

Penny Tax Overview

- **2012 Penny Tax for Roads Passed by Popular Vote**
- **Scope: \$1.07 Billion or 22 Years (Whichever Occurs First)**
 - Improvements to highways, roads (paved and unpaved), streets, intersections, and bridges including related drainage system improvements (\$656,020,644)
 - Continued operation of mass transit services provided by Central Midlands Regional Transit Authority including implementation of near, mid and long-term service improvements (\$300,991,000)
 - Improvements to pedestrian sidewalks, bike paths, intersections and greenways (\$80,888,356)
- **Types of Projects**
 - Roads
 - Pedestrian Improvements
 - COMET
 - Bikeways
 - Sidewalks
 - Bus
 - Greenways
 - Neighborhood Improvements
 - System
 - Road Widening
 - Special Projects
 - Dirt Road Paving
 - Right of Way Acquisitions
 - Resurfacing
 - Intersections
- **Annual CTIP Approvals by Richland County Council**
- **2015 Annual Report**

Penny Tax Overview

- 2015 Annual Report



8 LOOK AHEAD 2016



CONSTRUCTION TO BE COMPLETED WITHIN 6 MONTHS:

- Summit Parkway and Summit Ridge Drive Intersection
- Riverbanks Zoo Transportation-Related Projects 1
- Innovista Greene Street Phase 1
- Lincoln Tunnel Greenway
- Various Sidewalks, Bikeways, Resurfacing Projects and Dirt Road Paving Projects

CONSTRUCTION TO BE STARTED WITHIN 12 MONTHS: TOTALING APPROXIMATELY \$110 MILLION

- Bluff Road Widening Phase 1
- Hardscrabble Road Widening
- Shop Road Extension Phase 1
- Three Rivers Greenway Extension Phase 1
- North Main Street (Phases IA2 & III, II & IV) Widening
- Broad River Road and Rushmore Road Intersection
- Clemson Road and Rhame Road/North Springs Road Intersection
- Farrow Road and Pisgah Church Road Intersection
- Kennerly Road and Coogler Road/Steeple Ridge Road Intersection
- North Springs Road and Risdon Way Intersection
- Broad River Neighborhood Improvements
- Various Sidewalks, Bikeways, Dirt Road Projects and Resurfacing Projects

16

RICHLAND PENNY PROGRAM PROJECTS BY THE NUMBERS

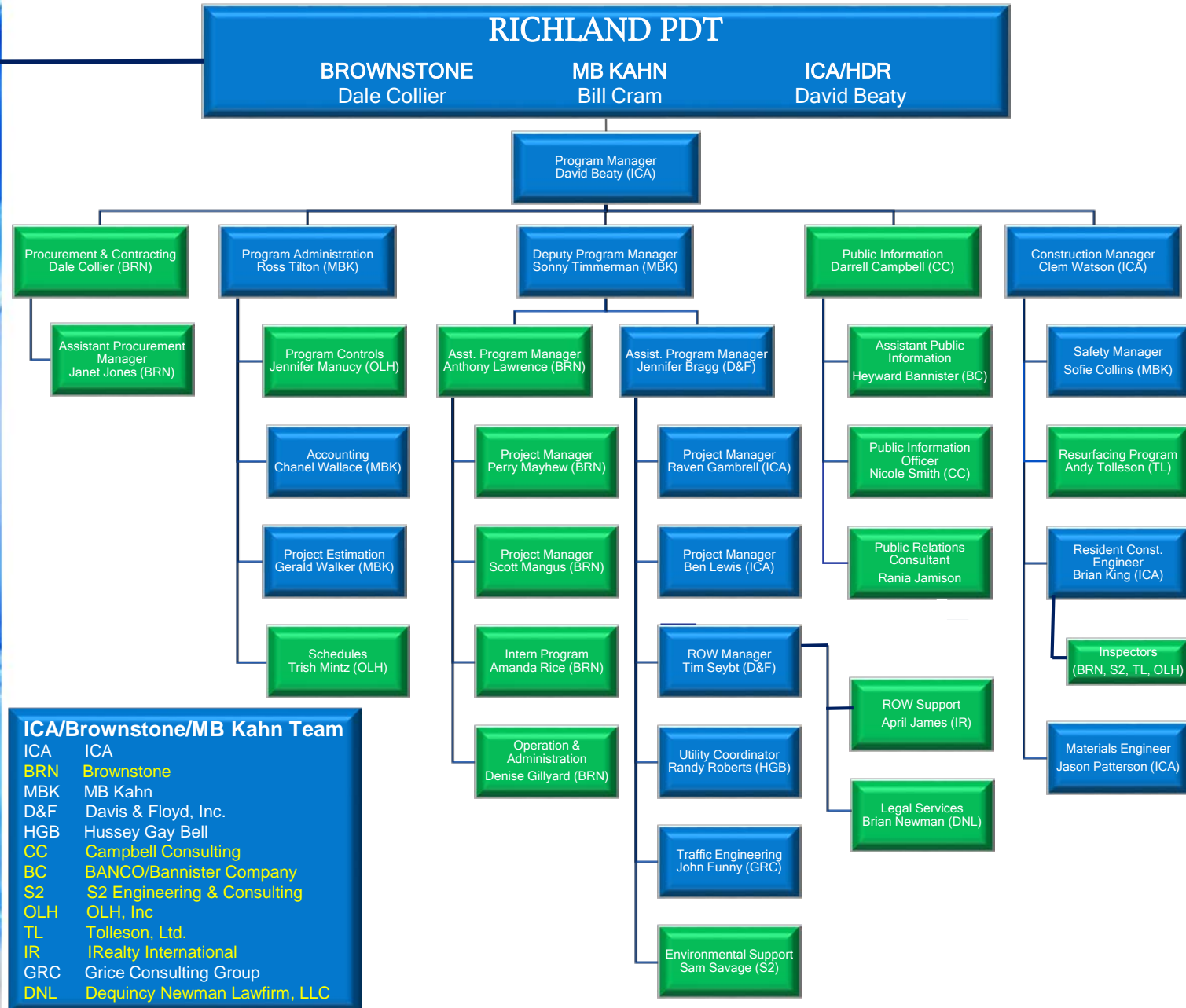


 15 GREENWAYS	 14 WIDENINGS	 87 BIKEWAYS	 56 SIDEWALKS	 7 NEIGHBORHOOD IMPROVEMENT PROJECTS
 15 INTERSECTIONS	 5 SPECIAL PROJECTS	 RESURFACING PROGRAM	 DIRT ROAD PROGRAM	

4



PDT Team Overview



ICA/Brownstone/MB Kahn Team	
ICA	ICA
BRN	Brownstone
MBK	MB Kahn
D&F	Davis & Floyd, Inc.
HGB	Hussey Gay Bell
CC	Campbell Consulting
BC	BANCO/Bannister Company
S2	S2 Engineering & Consulting
OLH	OLH, Inc
TL	Tolleson, Ltd.
IR	IRealty International
GRC	Grice Consulting Group
DNL	Dequincy Newman Lawfirm, LLC

Project Advertisements

- **Richland PDT Website**
 - www.richlandpenny.com
- **SC Business Opportunities (SCBO)**
 - www.mmo.sc.gov/PS/general/scbo/PS-scbo-online.phtm
- **Richland County Website**
 - <http://www.rcgov.us/Government/Departments/BusinessOperations/Procurement.aspx>

A vertical blue abstract graphic on the left side of the slide, featuring flowing, wavy lines and a gradient from light to dark blue.

Plans and Specifications

- **Richland County PDT Website**
 - Free download of PDF files
- **Richland PDT Office**
 - 201 Arbor Lake Drive, Columbia, SC 29223
 - Hard Copies of Plans for Viewing Only
- **Richland County OSBO Office**
 - 2020 Hampton Street, Columbia, SC 29201
 - Hard Copies of Plans for Viewing Only
- **The Print Machine**
 - 1241 Assembly Street, Columbia, SC 29201
 - Plans Available for Purchase

Bidding

- **Sheltered Market Bids**
- **Competitively Sealed Bids**
- **30-Day Bid Period (Typical)**
- **Mandatory Pre-Bid Conference**
 - Face to face meeting with project team, client and interested GC's
- **Sealed Bid Due Date and Time**
 - Richland County Procurement Office
2020 Hampton Street, Third Floor
Columbia, SC 29210
 - Bids Are Read Aloud Publicly
- **Submit Bids Exactly as requested**
 - NACIS Code
 - Bid Bonds
 - Insurance Requirements
 - Richland County Forms
 - DBE/SLBE Participation Form
 - License Requirements
 - License Limitations
 - Line Items Bids by Quantity (Lump Sum, Each, CY, LF, NEC)

Sample Forms

Richland Co. Transportation
Improvement Program

Bid Form

Dec. 2, 2015

2015 SIDEWALK PACKAGE S2



LENGTH: 0.068 0.07 0.14
(MI)

BAMS #	DESCRIPTION	UNITS	Maple Street	Mildred Avenue	TOTAL PROJECT QUANTITY	UNIT PRICE	TOTAL PRICE
1031000	MOBILIZATION	LS	NEC.	NEC.	1		
1050800	CONS. STAKES, LINES AND GRADES	LS	NEC.	NEC.	1		
1071000	TRAFFIC CONTROL	LS	NEC.	NEC.	1		
2014000	SELECTED CLEARING AND GRUBBING	LS	NEC.	NEC.	1		
2016000	SELECTED REM. OF MARKED TREES	LS	-	NEC.	1		
2022000	REMOVAL AND DISPOSAL OF ITEM # 718000 (6.5 LF. GRAVITY WALL)	LS	NEC.	-	1		
2024100	REMOVAL AND DISPOSAL OF EXISTING CURB	LF	74	-	74		
2025000	REMOVAL AND DISPOSAL OF EXISTING ASPHALT PAVING	SY	36	30	66		
2026000	REMOVAL AND DISPOSAL OF EXISTING CONCRETE PAVING	SY	17	-	17		
2031000	UNCLASSIFIED EXCAVATION	CY	300	23	323		
2033015	BORROW EXCAVATION	CY	80	37	117		
3069900	MAINTENANCE STONE	TON	20	20	40		
4030320	H/M ASPH. SURF. CR. TYPE B	TON	-	1	1		
6051120	PERM. CONS SIGNS (GRND MOUNTED)	SF	96	96	192		
6271010	4" WHITE SOLID LINES THERMOPLASTIC 90 MIL.	LF	-	792	792		
6271015	8" WHITE SOLID LINES - THERMOPLASTIC 125 MIL.	LF	188	166	354		
6251025	24" WHITE SOLID LINES - THERMOPLASTIC 125 MIL.	LF	28	12	40		
7011401	CONC./STRUC-CL.4000(RETAINING WALL)	CY	11	-	11		
7143615	15" SMOOTH WALL PIPE (CONCRETE)	LF	-	8	8		
7181100	BRICK MASONRY (CONTOURED WALL) - INCLUDES CONCRETE WALL CAP	CY	8.92	-	8.92		
7183060	RESET RUBBLE MASONRY STEPS	CY	3.52	-	3.52		
7196190	MANHOLE (TOP ONLY)	EA	-	1	1		
71961AA	60" X 60" JUNCTION BOX (TOP ONLY)	EA	-	1	1		
7196250	CATCH BASIN - TYPE 9 - 60" X 60" (BOX ONLY)	EA	-	1	1		
7197140	ADJUST UTILITY BOX (REMOVE/RESET UTILITY BOX COVER FLUSH W/CONC SIDEWALK)	EA	4	-	4		
7203110	CONCRETE C & G (1'-6") VERT	LF	92	-	92		
7204100	CONCRETE SIDEWALK (4" UNIFORM)	SY	157	209	366		
7204200	PEDESTRIAN RAMP RETROFIT	EA	3	-	3		
7204600	CONCRETE SIDEWALK (6" UNIFORM)	SY	36	13	49		
7204900	DETECTABLE WARNING SURFACE	SF	30	20	50		
7205000	CONCRETE DRIVEWAY (6" UNIFORM)	SY	36	15	50		
8081000	MOVING ITEM 1 - RELOCATE EXISTING SIGN	EA	1	-	1		
8081000	MOVING ITEM 2 - RELOCATE EXISTING SIGN	EA	1	-	1		
8081000	MOVING ITEM 3 - RELOCATE EXISTING SIGN	EA	-	1	1		
8081000	MOVING ITEM 4 - RELOCATE EXISTING SIGN	EA	-	1	1		
8100101	PERMANENT GRASSING FOR SMALL PROJECTS	ACRE	0.1	0.05	0.15		
8152007	SEDIMENT TUBES (INLET PROTECTION)	LF	48	24	72		
8153000	SILT FENCE	LF	350	50	400		
	TOTAL - DIRECT CONSTRUCTION						

Contractor: _____

Representative: _____

Date: _____

Sample Forms

SLBE AND DBE IDENTIFICATION SHEET

Information must be shown on this sheet and submitted with bid/proposal. Any DBE company identified below must be certified in accordance with certification programs of the State of South Carolina, either the Governor's Office of Small and Minority Business Assistance (OSMBA) or the South Carolina Unified Certification Program (SCUCP).

¹ Name & Address of SLBE/DBE (Subcontractor or Supplier)	Select Type of Firm		Scope/Type of Work	² Estimated Percentage of Total Contract
	SLBE	DBE		

¹ The designation of Firm A and/or B is not considered acceptable. I hereby certify that this company has communicated with and received quotes from the SLBE/DBE's listed above and that they are willing to perform the work as listed above and that this company is committed to utilizing the above firm(s) on this contract.

² Percent - show percent of total contract amount committed to each SLBE/DBE listed.

This form may be reproduced or additional sheets added in order to provide all requested information.

I declare under penalty of perjury that the information provided herein is true and correct.

SWORN to before me this _____ day of _____, 20____

Company

(Seal)

Notary Public for
My commission expires:

By: _____

Title:

Bid Evaluation Procedure

- **Lowest Responsive and Responsible Bid Wins**
 - Check for Calculation Errors
 - Check for Correct Forms Submitted
 - Check License
 - Check Bid Bond
 - Check SLBE Requirements
 - Check DBE Requirements
- **Lose Bid:**
 - Follow-Up After Receiving Notifications Accepted
- **No Bid**
 - Notifications Posted on Richland Penny Website
- **Tie Bids**
 - Coin Flip Approved Method to Break Ties as Approved in Procurement Manual
- **Withdrawal of Bids**
 - Written Notification Required from Bidder for County Consideration

Bid Award Procedure

- **Recommendation Letter Prepared for County Council Approval**
 - Verified Final Bid with Resolved Calculation Errors (if any)
 - Verification of Forms Submitted
 - Current Contractor License
 - Appropriate Bid Bond
 - SLBE Requirements Verified (NAICS Codes)
 - DBE Requirements Verified
- **Approval on County Council Required by Majority Vote**
 - Regular Council Meetings on the 1st and 3rd Tuesday of Each Month
 - 6:00pm in Council Chambers at 2020 Hampton Street, Columbia, SC
- **Notice of Intent to Award Issued**
 - Notice of Intent to be Posted on Penny and Richland County Websites
- **10-Day Protest Period**
 - Begins Immediately After the Notice of Intent is Issued
- **End of Protest Period**
 - PDT Approved to Proceed into Contract with the Approved Bidder

Contract

- **Contract Assembled by PDT Program Administrator**
 - 2 Contract Forms Utilized in PDT Program
 - Verification of Forms Submitted
- **Contractor Signature Secured**
 - Performance and Payment Bond Required
 - Required Insurance Information Required
- **Richland County Signatures Secured**
 - Signatures by Transportation Director, County Administrator and Council Chair
- **Pre-Construction Meeting Date Established**
 - Pre-Construction Meeting Hand-Off Project to PDT Construction Manager
- **Notice to Proceed Issued**
 - PDT and Contractor to Mutually Agree on NTP Date
- **Work Must Begin Within 10-Days of NTP**
- **Completion Required Within Contract Timeframe**
 - Liquidated Damages Assessed for Late Completion

Construction Schedule

- **Timeframe to Complete**
 - Per requirements indicated in Bid Documents
 - Verification of Forms Submitted
- **Construction Engineering Inspection (CEI) Responsibilities**
 - Material Testing and Inspections
 - Quality Assurance
 - Quality Control
- **Notification of Residents**
 - Contractor Communications Through PDT Personnel Only
- **Traffic Control**
 - Per SCDOT Requirements as Established in Bid Documents
- **Liquidated Damages**
 - Dollar per Day Assessment for Late Contract Completion
- **Closeout**

Safety

- Safety Is Non-Negotiable
- PDT Safety Manager to Monitor All Projects
- Immediate Correction of Safety Violations



PENNIES IMPACTING PEOPLE

RICHLAND COUNTY TRANSPORTATION PENNY PROGRAM



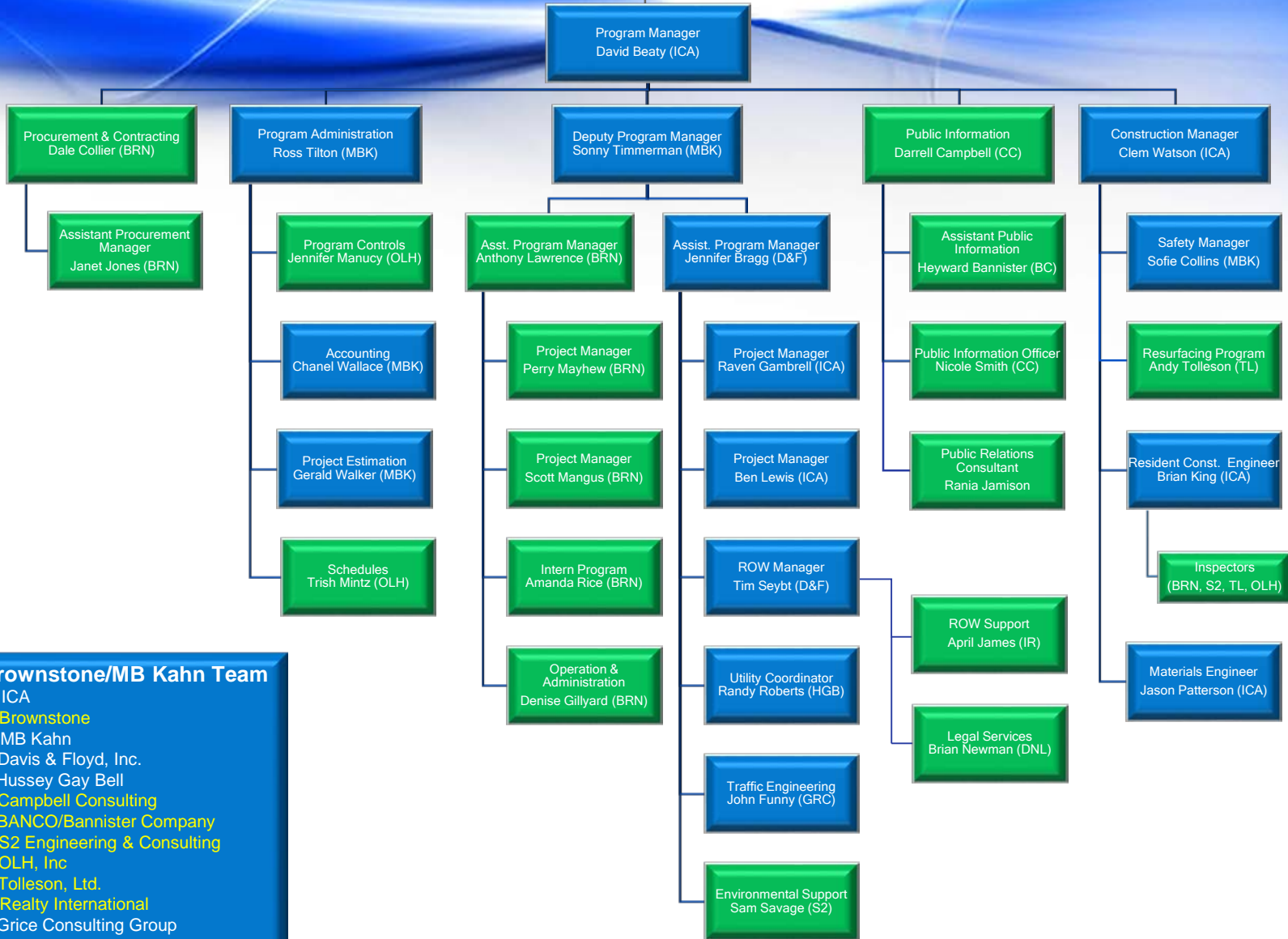
QUESTIONS

RICHLAND PDT (Principals)

BROWNSTONE
Dale Collier

MB KAHN
Bill Cram

ICA/HDR
David Beaty



ICA/Brownstone/MB Kahn Team

- ICA ICA
- BRN Brownstone
- MBK MB Kahn
- D&F Davis & Floyd, Inc.
- HGB Hussey Gay Bell
- CC Campbell Consulting
- BC BANCO/Bannister Company
- S2 S2 Engineering & Consulting
- OLH OLH, Inc
- TL Tolleson, Ltd.
- IR IRealty International
- GRC Grice Consulting Group
- DNL Dequincy Newman Lawfirm, LLC